

## Brief summary of the academic staff evaluation by students

Winter Semester 23/24

### BACHELOR – PRISHTINË

The questionnaire for the evaluation of the staff by the students was sent to the students in the last week of the lectures and before the exams. The questionnaire was prepared in online format and the distribution of the questionnaire was done via email. Students could rate questions for academic staff from 1-5 (1 min, 5 max). Below is the distribution of participants at the bachelor level according to semesters.

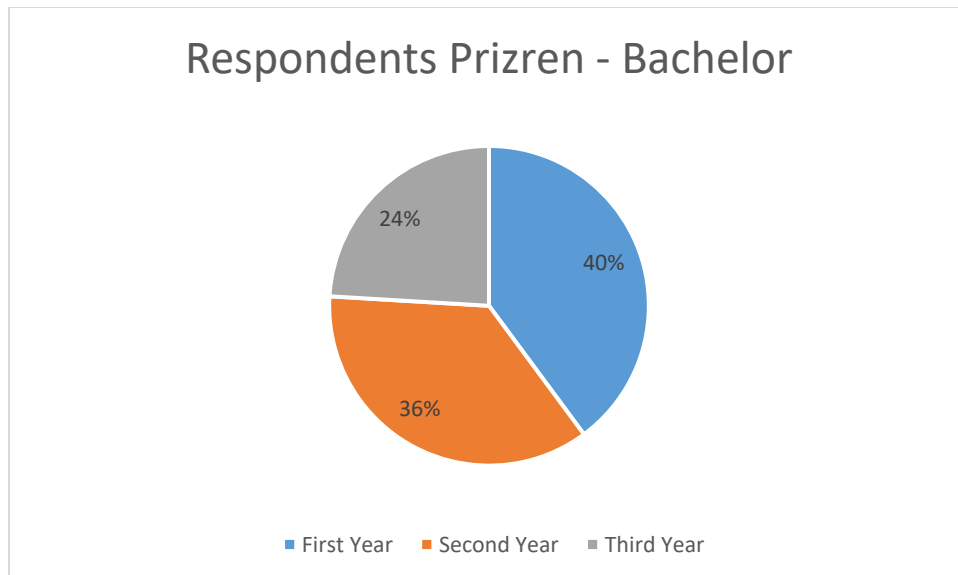


Figure 1 Percentage of responders based on semester

The highest number of students who participated in the survey are from the first semester 40%, followed by the third semester 36% and last by the fifth semester by 24%.

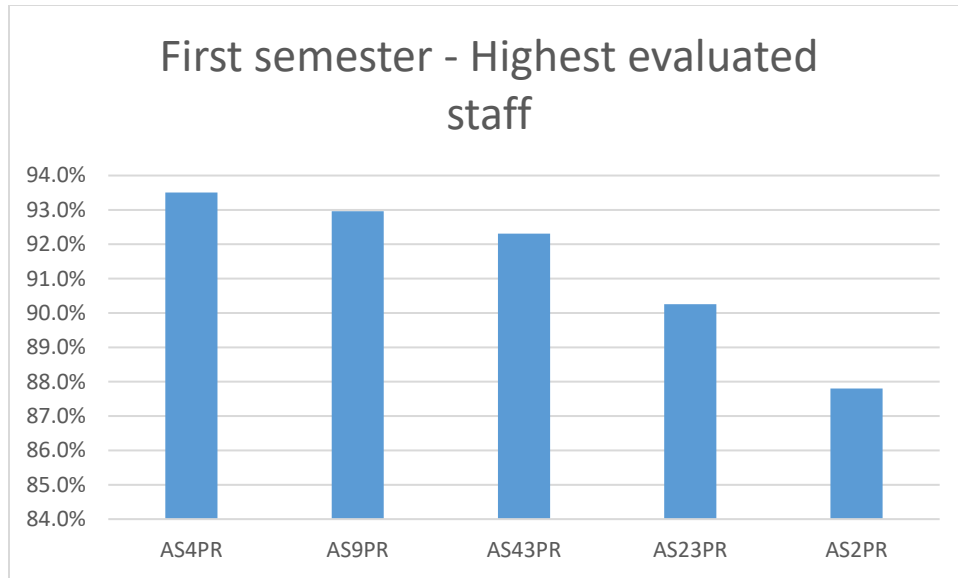


Figure 2 First semester – Highest evaluated staff

In the first semester, five of the academic staff with the highest evaluation are presented in Figure 2, where the staff AS4PR is evaluated with 93.5% in relation to the satisfaction of the students for the academic staff, while the staff with the lowest evaluation is the academic staff AS47PR with the evaluation 65% as presented in Table 1.

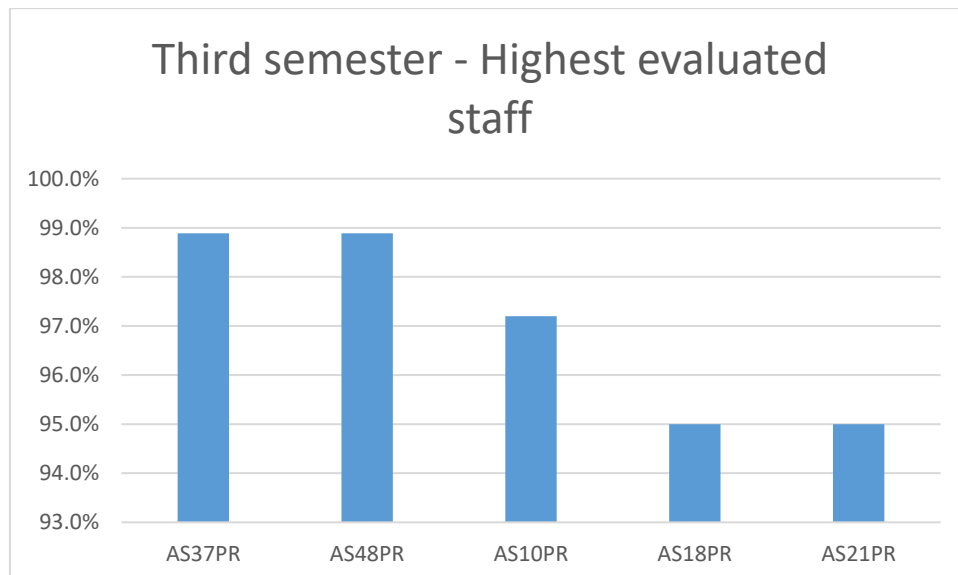


Figure 3 Third semester – Highest evaluated staff

In the third semester, five of the academic staff with the highest evaluation are presented in Figure 3, where the staff AS37PR is evaluated with 98.9% in relation to the satisfaction of the students for the academic staff, while the staff with the lowest evaluation is the academic staff AS53PR with the evaluation 75% as presented in Table 1.

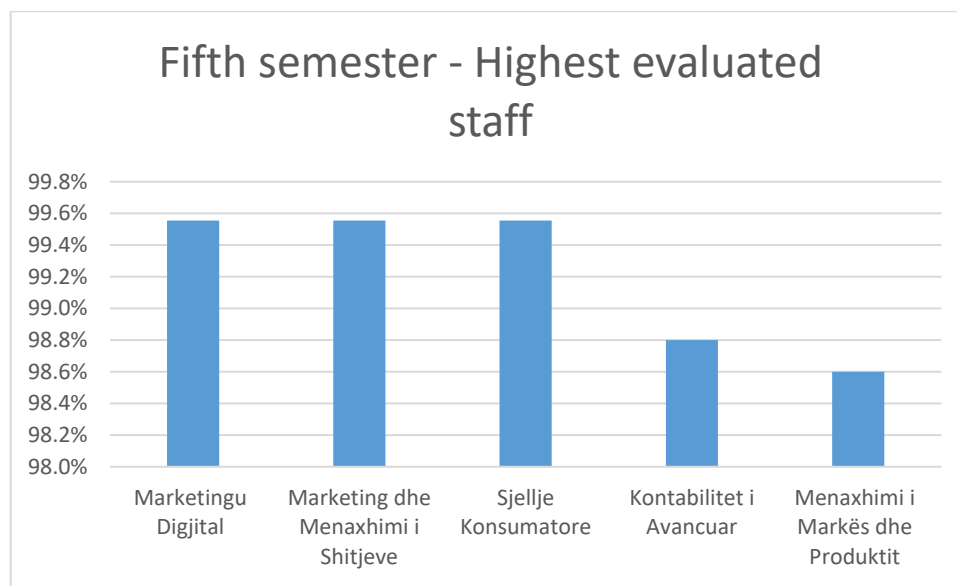


Figure 5 Fifth semester – Highest evaluated staff

In the fifth semester, the academic staff with the highest evaluations are presented in Figure 5, where the staff AS24PR and AS45PR are evaluated with 99.6% in relation to the satisfaction of the students for the academic staff, while the staff with the lowest evaluation is the academic staff AS41PR with the evaluation 64% as presented in Table 1.

Table 1 Results of students for academic staff evaluation for semesters 1, 3 and 5

Academic Staff	Subject	Semester	Average Min 1- Max5
AS2PR	Produktivitet Personal me TI	1	4.39%
AS22PR	Hyrje në Kontabilitet Financiar	1	3.94%
AS23PR	Hyrje në Menaxhment	1	4.51%
AS29PR	Matematikë	1	4.30%
AS3PR	Hyrje në Makroekonomi	1	3.33%
AS32PR	Hyrje në Menaxhment	1	4.17%

AS34PR	Matematikë	1	3.12%
AS35PR	Gjuhë Angleze	1	3.35%
AS36PR	Hyrje në Kontabilitet Financiar	1	4.33%
AS4PR	Matematikë	1	4.68%
AS40PR	Produktivitet Personal me TI	1	3.71%
AS43PR	Hyrje në Makroekonomi	1	4.62%
AS47PR	Hyrje në Kontabilitet Financiar	1	3.07%
AS51PR	Gjuhë Angleze	1	4.25%
AS8PR	Hyrje në Makroekonomi	1	4.05%
AS9PR	Hyrje në Kontabilitet Financiar	1	4.65%
AS37PR	Metodat Statistikore për Biznes II	3	4.94%
AS48PR	Menaxhimi Financiar	3	4.94%
AS10PR	E Drejta Biznesore	3	4.86%
AS18PR	Sjellje Organizative dhe Lidërsip	3	4.75%
AS21PR	Tregtia Ndërkombëtare	3	4.75%
AS7PR	Metodat Statistikore për Biznes II	3	4.62%
AS4PR	Metodat Statistikore për Biznes II	3	4.61%
AS8PR	Menaxhimi Financiar	3	4.60%
AS16PR	Sjellje Organizative dhe Lidërsip	3	4.47%
AS19PR	Menaxhimi Financiar	3	4.28%
AS33PR	Metodat Statistikore për Biznes II	3	4.28%
AS17PR	Menaxhimi i Operacioneve	3	4.09%
AS38PR	E Drejta Biznesore	3	4.07%
AS13PR	Menaxhimi i Operacioneve	3	4.05%
AS52PR	Tregtia Ndërkombëtare	3	4.00%
AS23PR	Sjellje Organizative dhe Lidërsip	3	3.98%
AS53PR	Menaxhimi i Operacioneve	3	3.75%
AS24PR	Marketingu Digjital	5	4.98%
AS45PR	Marketing dhe Menaxhimi i Shitjeve	5	4.98%
AS45PR	Sjellje Konsumatore	5	4.98%
AS9PR	Kontabilitet i Avancuar	5	4.94%
AS11PR	Menaxhimi i Markës dhe Produktit	5	4.93%
AS9PR	Kontabiliteti i Tatimeve	5	4.33%
AS30PR	Investime dhe Analiza Financiare	5	4.29%
AS6PR	Politikat Fiskale dhe Tatimet	5	4.25%
AS44PR	Auditimi	5	4.22%
AS50PR	Institucionet Financiare dhe Tregjet e Kapitalit	5	4.18%
AS50PR	Menaxhimi Bankar	5	4.18%
AS23PR	Siguracioni dhe Menaxhimi i Riskut	5	4.16%
AS27PR	Siguracioni dhe Menaxhimi i Riskut	5	4.14%
AS16PR	Zhvillimi i Mundësive / Planifikim Biznesor	5	3.91%
AS31PR	Ndërmarrësia dhe Menaxhimi i Inovacionit	5	3.84%
AS31PR	Menaxhment Bashkëkohor	5	3.84%

AS39PR	Menaxhimi i NVM	5	3.80%
AS25PR	Kontabilitet i Avancuar	5	3.41%
AS25PR	Auditimi	5	3.41%
AS41PR	Kontabiliteti i Tatimeve	5	3.20%